



KLIR ANALYTICS for Bandwidth

DATASHEET

Klir Technologies offers a hosted IT analytics platform for monitoring, analyzing, and reporting on applications, bandwidth, networks, and servers. Klir Analytics provides instant insight into performance and utilization through community-based dashboards, reports, and alert templates, empowering you to leverage the expertise of other professionals to better manage IT.

Klir Bandwidth Module

Bandwidth consumption increases as business application requirements expand and additional users come on to the network. Klir Analytics for Bandwidth arms you with the information needed to optimize your bandwidth resources. Klir provides both real-time visibility and historical data about bandwidth utilization, delivering IT analytics that identify the top applications and individuals impacting your network resources.

Klir provides access to community-based dashboards, reports, and alert templates to assist you with detailed bandwidth analysis. Anytime, anywhere—you can access data through a Web interface and drill down to identify specific devices, applications, or users consuming valuable bandwidth.

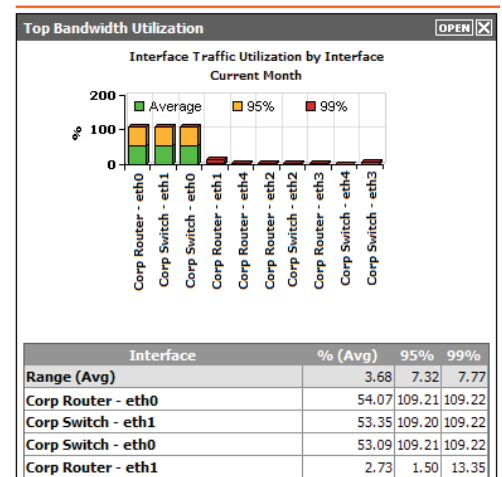
Combined with historical data, regression analysis and a heuristics-based alerting engine, you get access to one of the most sophisticated enterprise IT management systems in the marketplace.

Instant Insight into Improper Bandwidth Use

With visibility into bandwidth consumption, you can readily identify improper use of business applications (like e-mail spamming) or non-business applications (like iTunes). Armed with this information you can protect and preserve precious network resources.

The Klir Advantage

Klir's Software-as-a-Service (SaaS) delivery model ensures a rapidly deployable, cost-effective system that offers you enterprise-class reliability, security, and functionality. Klir manages the solution, while you leverage the capabilities. In addition to product and usage discussion and information exchange, the Klir user forum provides powerful solution-sharing capabilities that enable community-based evolution. Context-targeted information feeds from the web to assist you on your analytics and diagnostic tasks with the latest bug fixes, release notes, and how-to guides from trusted vendors, partners and user forums.

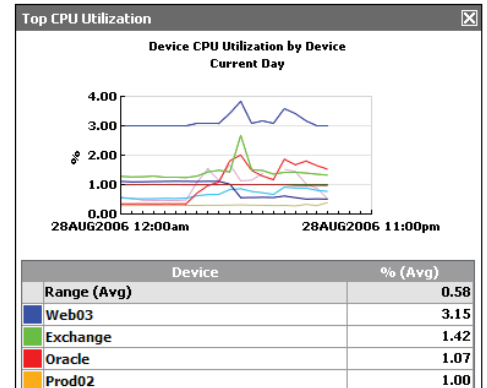


Features available to all Klir Accounts

- **Always-on traffic monitoring.** Data is continuously collected and aggregated to provide a real-time and historical view of bandwidth utilization. You can analyze data month-over-month or quarter-over-quarter to compare problem periods to improve troubleshooting.
- **Integrated view of traffic and network equipment.** The Klir solution provides the ability to drill down from physical performance to traffic reports individual equipment or interfaces. Data can be sorted by any common attribute – whether by service provider, location or circuit type.
- **95th/99th percentile analysis.** Klir calculates 95th and 99th percentile utilization of all traffic data to provide detailed analytics to capture peak demands. This helps you to ensure adequate bandwidth and network resources are provisioned to meet business requirements during high volume transaction periods.
- **Best practice dashboards, reports and alert templates.** A multitude of best-practice dashboards, reports, and alerts are published by the community, and is growing everyday. Tagging enables you to identify and apply these templates to your IT environment and customize as needed.
- **Agentless design.** Data is collected by a downloadable software appliance, which resides inside the customer premises, acting as a single point for active and passive data collection from any device on the network. Data is then compressed, encrypted and transferred to Klir’s central data center, where it is maintained in a high-availability cluster and accessible to you through a Web browser. No device-resident agents are required.
- **Sophisticated alerting.** Klir includes a sophisticated heuristics alerting engine, that supports alerts based on threshold, cumulative, variable, standard deviation, and regression data. Alerts can be applied globally by any common attribute, and include primary, secondary, and tertiary contacts to facilitate flexible escalation rules.

Unique Features available to Klir Enterprise Accounts

- **Klir Cost[®] Internet circuit key performance indicators (cKPI).** Klir provides cKPIs for you to audit ISP costs and committed information rates based on actual bandwidth utilization. Understanding cKPIs enables you to accurately forecast budget requirements based on actual utilization.
- **NetFlow and sFlow support.** Klir supports industry standard packet-sampling protocols NetFlow (Cisco) and sFlow (HP, Juniper, Hitachi, Extreme, Foundry) to provide granular traffic flow sampling and analysis by port and protocol. Heavy usage is identifiable down to an individual IP address.
- **Preconfigured port and protocol combinations.** The Klir system is configured with ICANN standard port and protocol combinations for everyday applications, in addition to supporting customized assignment of port and protocol combinations.



About Klir Technologies

Klir radically transforms IT management by delivering instant IT visibility, community expertise, collaborative best practices, and a personalized user experience.

Klir Analytics provides insight into performance and utilization through customizable dashboards, reports, and alert templates, increasing uptime, optimizing IT, forecasting resource needs, and identifying potential problems.

Klir is a privately held, Seattle-based company founded in 2000. The company’s mission is to be the world leader in SaaS-based IT analytics by providing community insight and information to predict the unexpected. Klir is led by a team of executives with extensive experience in the technology and financial sectors.

Get Klir Analytics Now!
www.klir.com/free